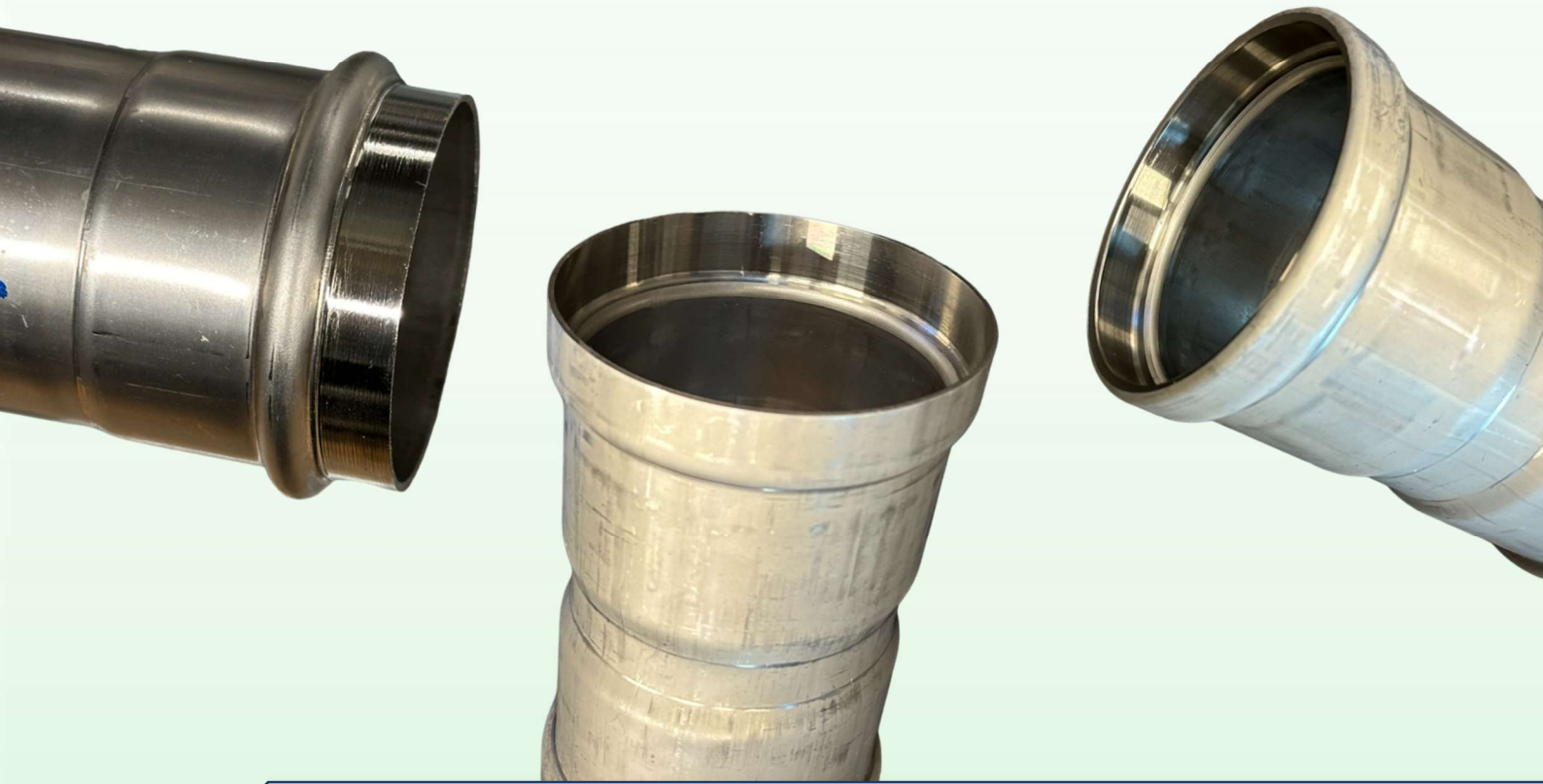


# ***Tube End Machining***

Ø 20 mm – 200 mm

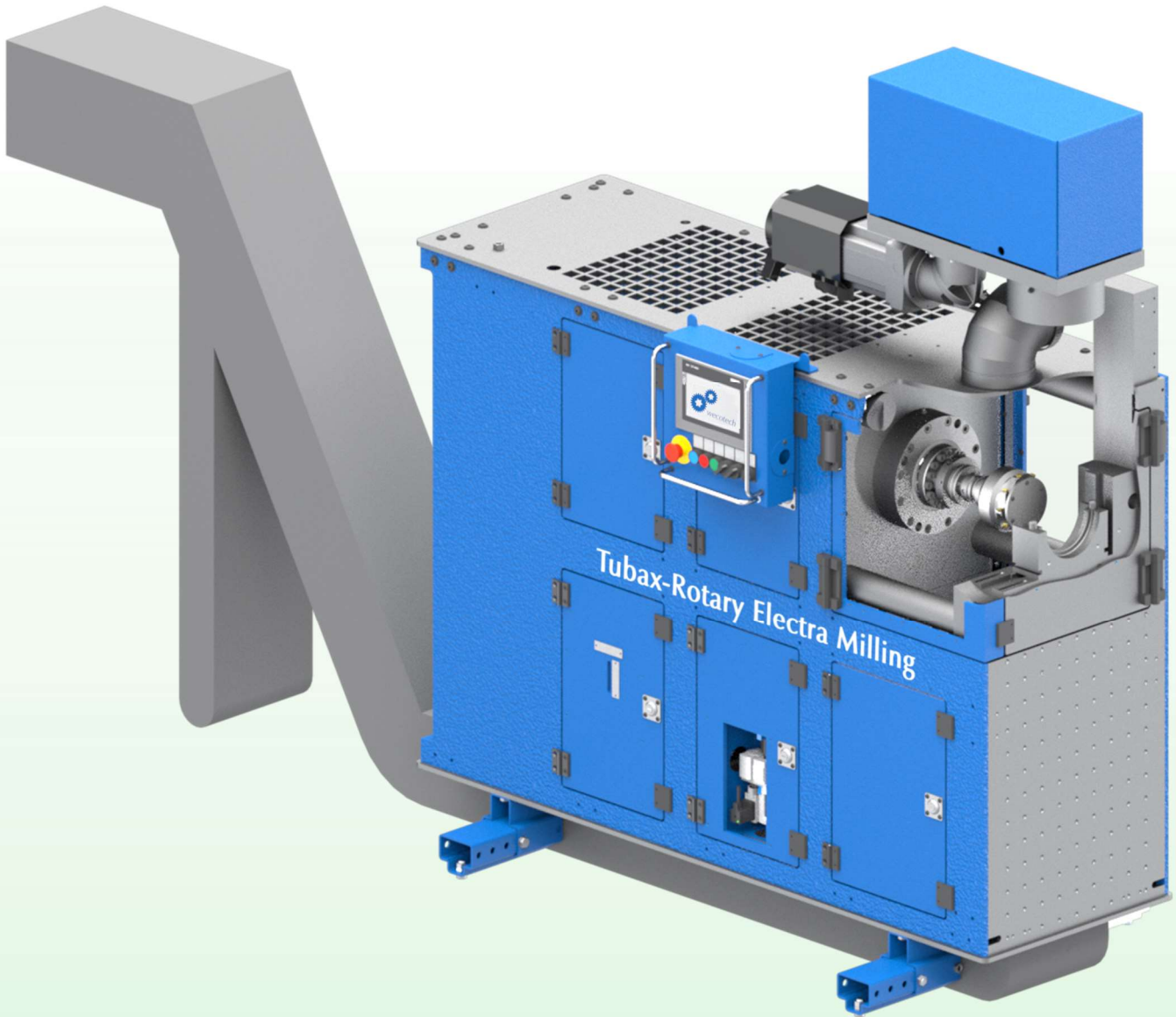
$\frac{3}{4}$ " –  $6\frac{1}{4}$ "



***Tubax-Rotary Electra Milling***



# Tubax-Rotary Electra Milling



## Technical Data

### Forming unit variant 200

Tube diameter	40 - 200 mm *
Max clamping length	100 mm *
Mean cycle duration	~10 s
* Depending on tool	

### Forming unit variant 400

Tube diameter	40 - 400 mm *
Max clamping length	250 mm *
Mean cycle duration	~20 s
* Depending on tool	

### Electrical equipment

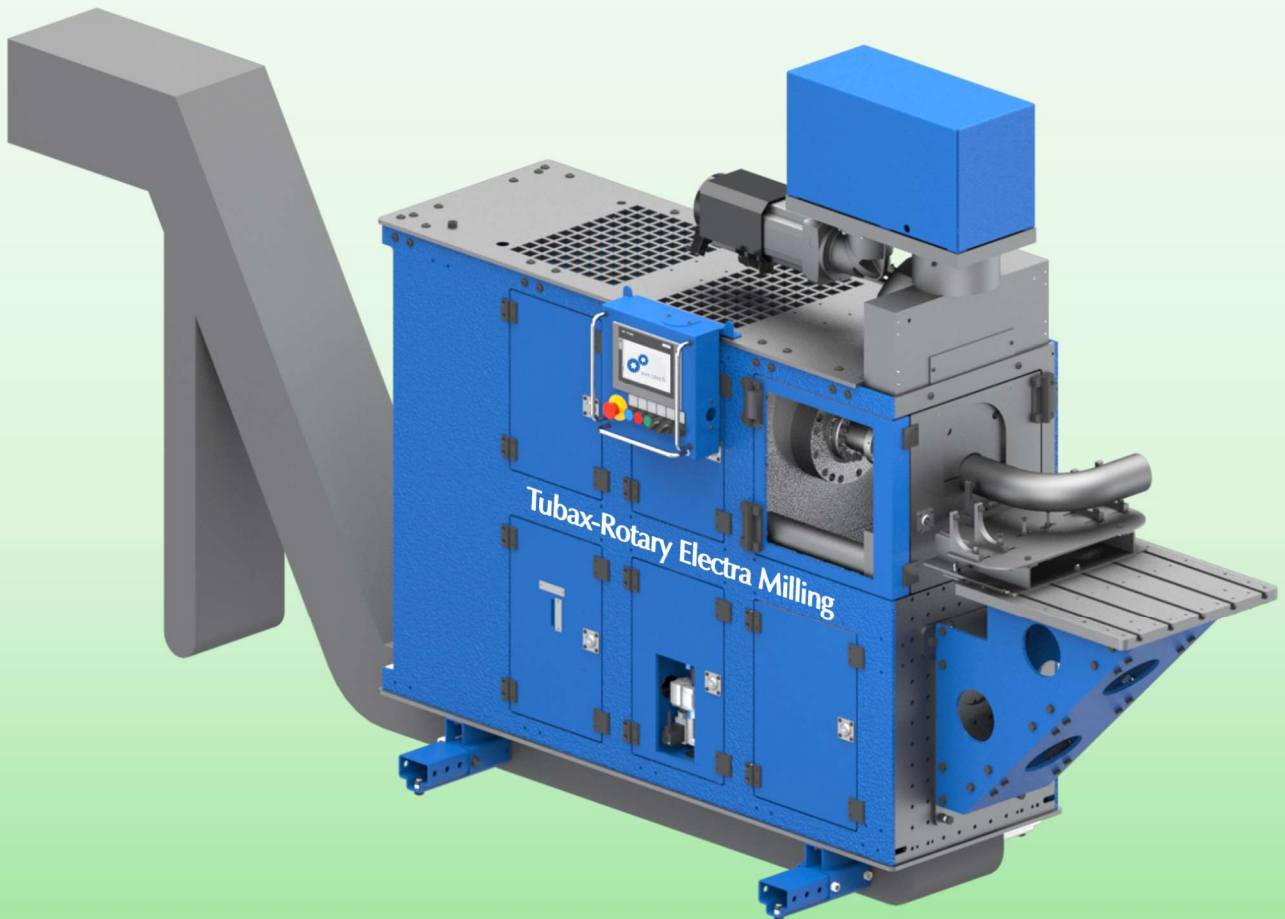
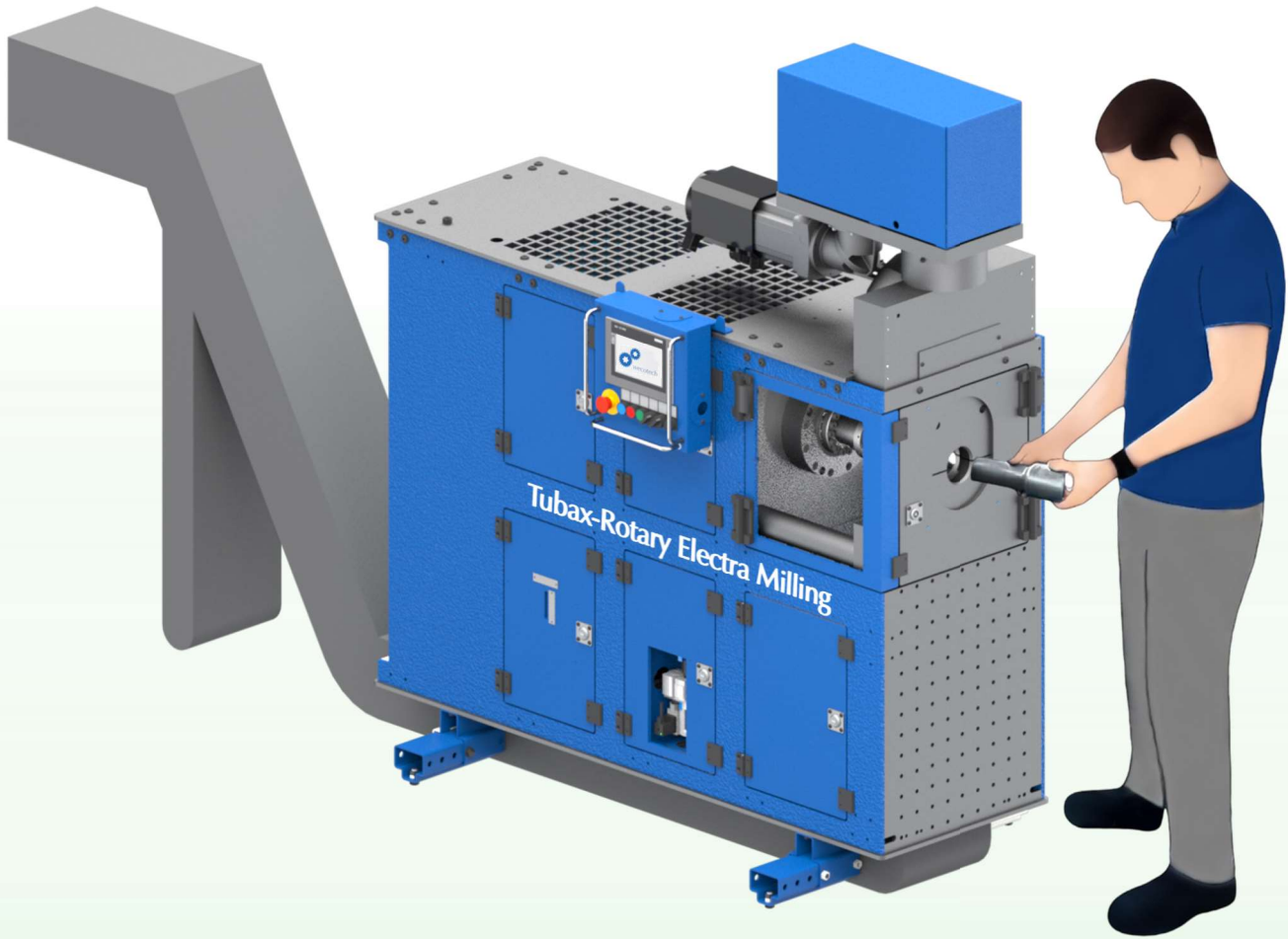
Connection data	400V / 50Hz / 3LNPE
PLC Siemens	
7" color touchscreen	
USB interface for program transfer	
Safety foot switch	

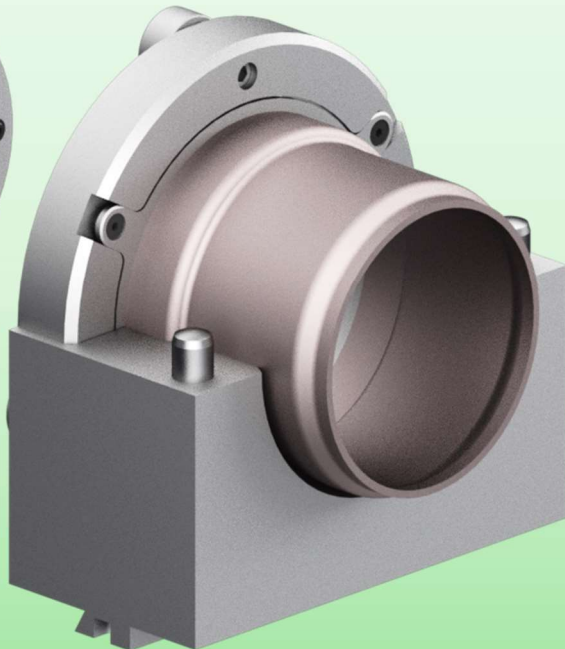
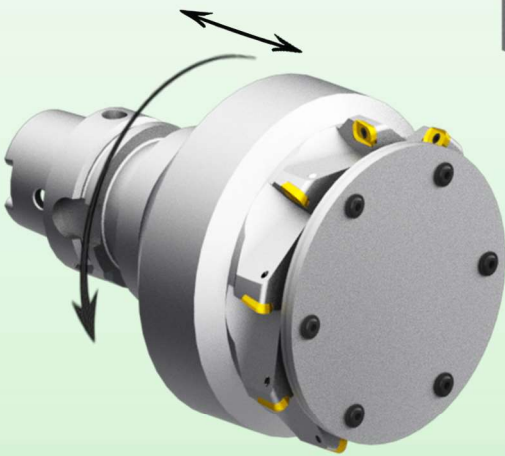
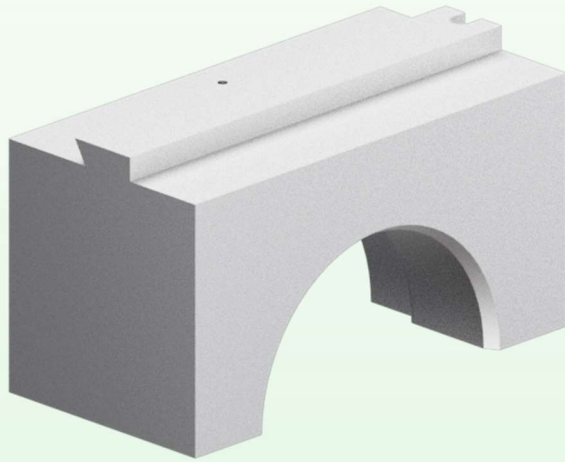
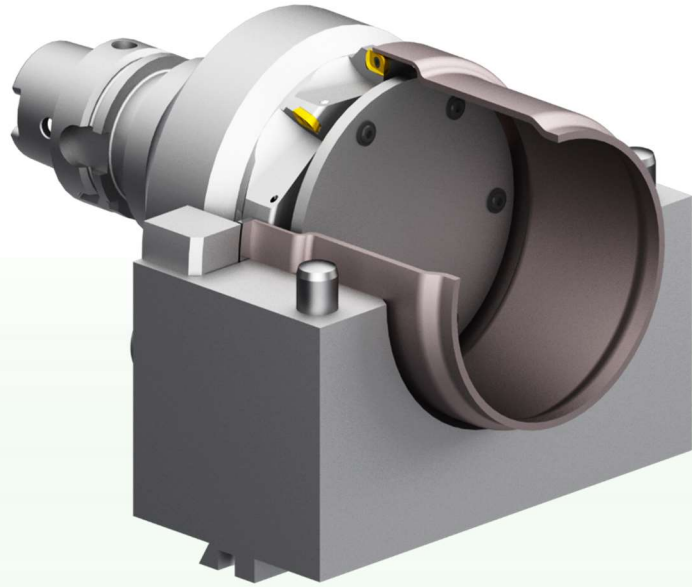
### Control

Milling software (freely programmable up to 200 rows)  
 Memory for up to 250 programs  
 Set-up, manual and production modes  
 Login (Service/Maintenance/Set-up/Shift chief)  
 Workpiece counter (Total/Shift reset)

### Machine features

HW-Flex universal housing  
 Rolling and clamping unit  
 Central lubrication for sliding surface  
 Servo motor and gear for milling unit  
 Servo motor and gear for clamping unit  
 Tooling holder for rolling head and clamping jaws  
 Horizontal working position  
 Dimensions: L = 1800; W = 550; H = 1880 mm  
 Emission sound pressure level 78 dB(A)  
 Weight ca. 1500 kg  
 Documentation in German







wecotech

